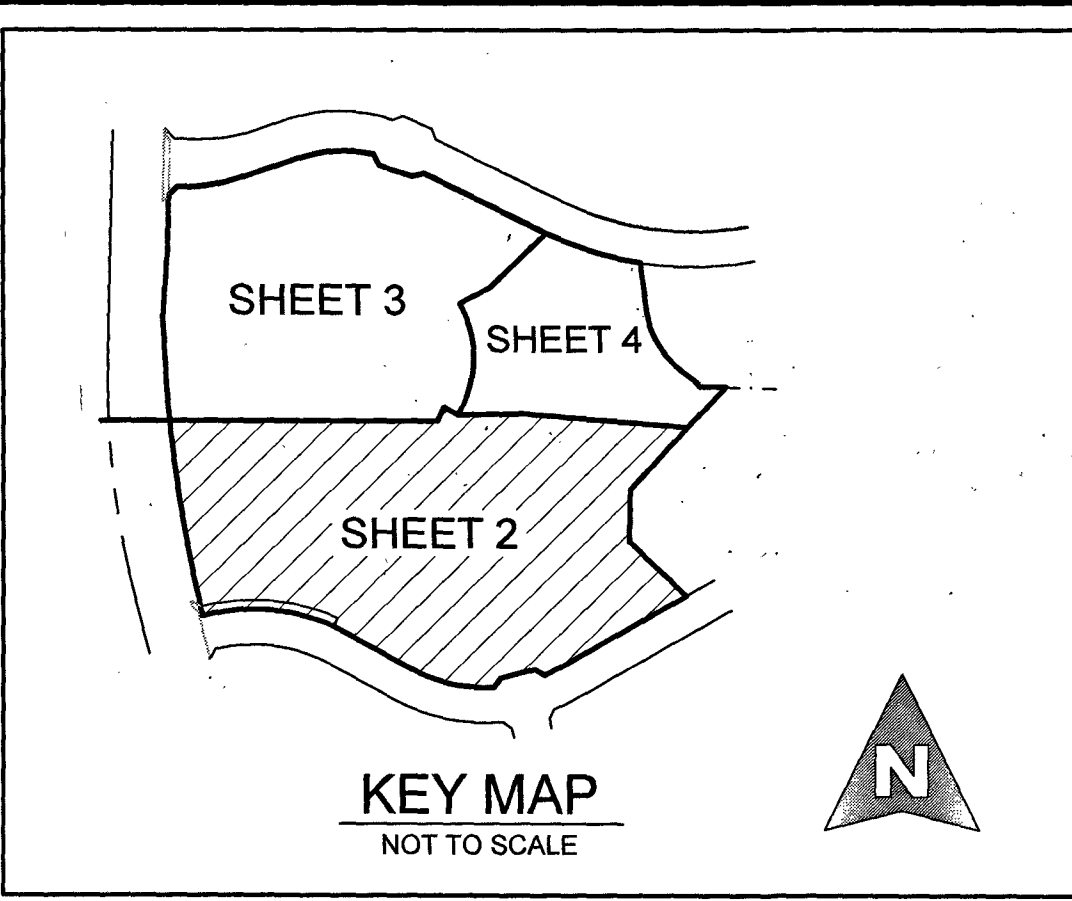


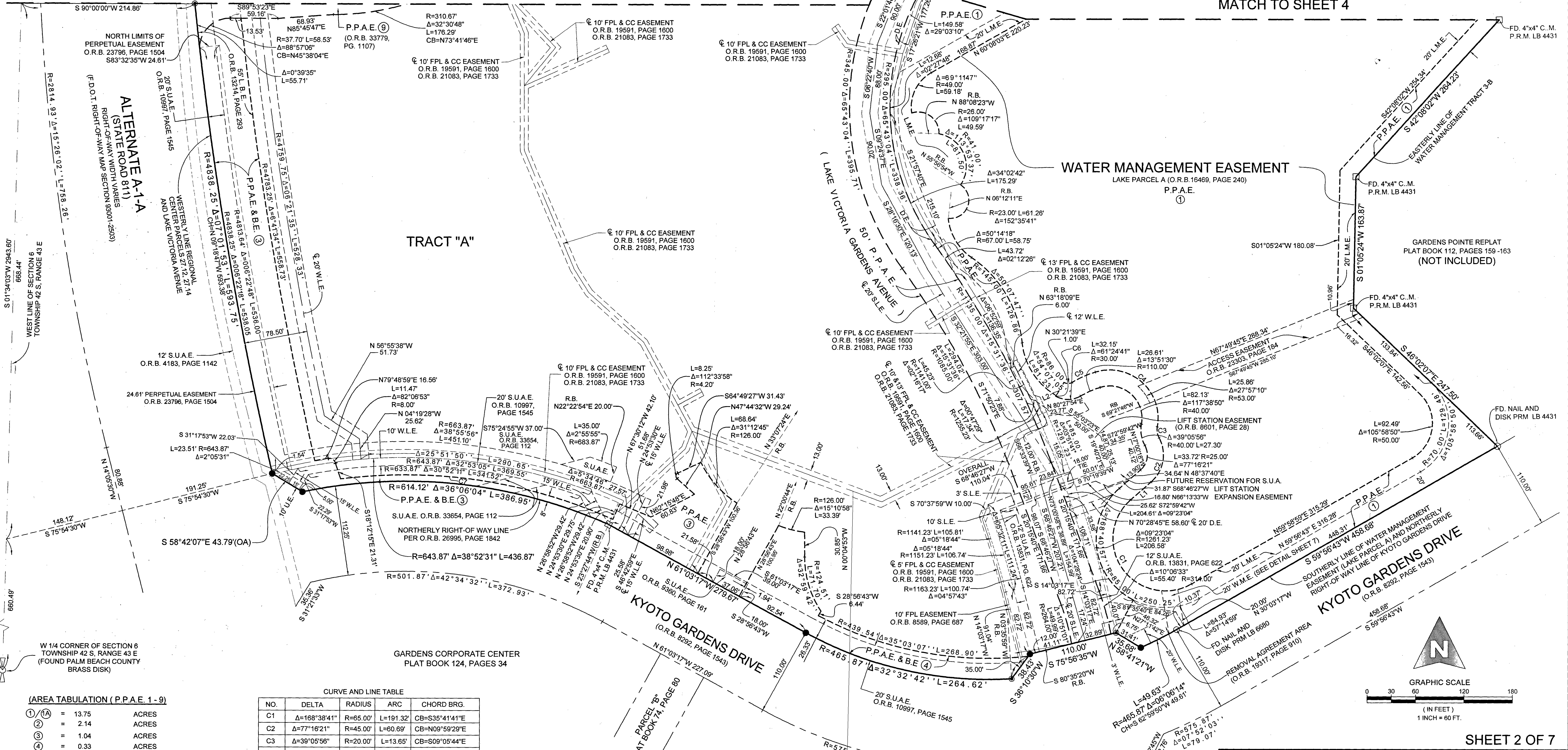
DOWNTOWN PALM BEACH GARDENS

LYING IN SECTION 6, TOWNSHIP 42 SOUTH, RANGE 43 EAST, CITY OF PALM BEACH GARDENS, PALM BEACH COUNTY, FLORIDA, BEING A REPLAT OF ALL OF DOWNTOWN AT THE GARDENS, AS RECORDED IN PLAT BOOK 118, PAGES 130 THROUGH 133, PUBLIC RECORDS OF PALM BEACH COUNTY, FLORIDA.



MATCH TO SHEET 3

MATCH TO SHEET 4



(AREA TABULATION (P.P.A.E. 1-9))

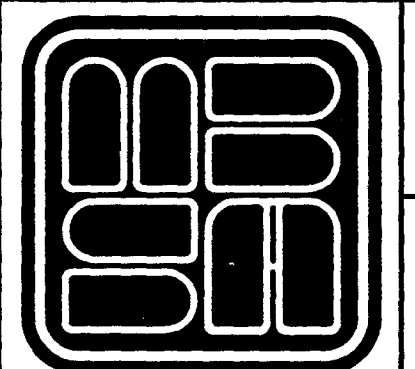
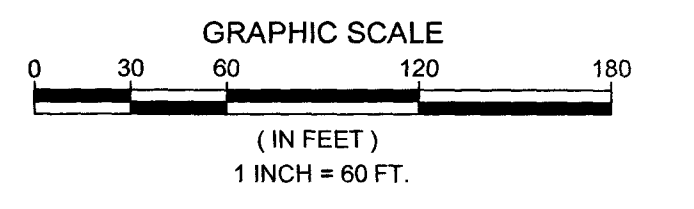
①	=	13.75	ACRES
②	=	2.14	ACRES
③	=	1.04	ACRES
④	=	0.33	ACRES
⑤	=	0.90	ACRES
⑥	=	0.49	ACRES
⑦	=	0.33	ACRES
⑧	=	0.86	ACRES
⑨	=	0.27	ACRES
TOTAL	=	20.11	ACRES

(P.P.A.E. ② = LAKE VICTORIA GARDENS AVE.)

CURVE AND LINE TABLE

NO.	DELTA	RADIUS	ARC	CHORD BRG.
C1	Δ=168°38'41"	R=85.00'	L=191.32'	CB=S35°41'41"E
C2	Δ=77°16'21"	R=45.00'	L=60.69'	CB=N09°59'29"E
C3	Δ=39°05'56"	R=20.00'	L=13.65'	CB=S09°05'44"E
C4	Δ=117°38'50"	R=60.00'	L=123.20'	CB=N48°22'11"W
C5	Δ=13°51'30"	R=130.00'	L=31.44'	CB=S65°52'43"W
C6	Δ=61°24'41"	R=10.00'	L=10.72'	CB=N89°39'18"E
C7	Δ=31°46'19"	R=622.12'	L=344.98'	CB=N81°36'22"W

NO.	BEARING	DISTANCE
L1	S48°37'40"W	33.58'
L2	S30°21'39"W	19.00'



MICHAEL B. SCHORAH & ASSOCIATES, INC.
1850 FOREST HILL BLVD., SUITE 206
WEST PALM BEACH, FLORIDA 33406
EB# 2438 TEL. (561) 968-0080 FAX. (561) 642-9726 LB# 2438

DOWNTOWN PALM BEACH GARDENS